



contents

company information pages 4-5

choosing your next corporate collection pages 6-7

corporate fashion collection pages 8-19
A fashionable collection of ladies and men’s washable tailoring. Tailored from a superfine Polyester/Wool/Lycra fabric and available in Black, Navy, Navy multi-stripe and a new beautiful Black multi-stripe design. A 13 piece collection offering ladies a choice of 4 jackets, 2 trousers, 3 skirts and a waistcoat and for the men a contemporary 2 button jacket, waistcoat and flat front trouser.

sophisticated collection pages 20-33
Europe’s finest washable clothing! Tailored from the finest wool with Lycra fabric available from any corporate clothing supplier. This high performance but ultra lightweight collection is worn by thousands of demanding wearers and the satisfaction rating is the highest Brook Taverner has ever recorded. A 16 piece collection with fashion and classic pieces to suit all wearers. Choose from 5 jackets, 3 trousers, 2 skirts and a waistcoat with matching menswear available in 2 and 3 button jackets with pleated and plain front trousers and a men’s waistcoat.

performance collection pages 34-43
Tailored from a superfine but incredibly strong mid weight Polyester/Wool Blend fabric the “Performance Collection” offers unrivalled performance whilst maintaining all of the sophistication and style that the Brook Taverner & “wardrobes” Business Collections have become famous for. This 11 piece collection offers something for all wearers from highly fashionable styles to more classic styles. Choose from 3 ladies jackets, 2 trousers, 2 skirts and a ladies waistcoat with a matching mens suit and waistcoat; all available in 4 colours.

easycare collection pages 44-53
Tailored from the finest Microfibre Polyester this is the ultimate in easycare washable Corporate Tailoring. This 8 piece collection offers something for all wearers from highly fashionable styles to more classic styles. Choose from 3 jacket styles, 3 trouser styles and 2 skirts; all available in 3 colours. Just wash your clothes at 40° put them on a hanger to dry and they are ready to wear in 2 hours. Wearers love the convenience of this lightweight ultra Easycare collection.

bi-stretch collection pages 54-63
Tailored from a 60% Wool, 38% Polyester and 2% Lycra fabric. The original high quality tailored collection. This collection set the standards that the rest tried to follow. The collection has been revitalized by the introduction of new jackets and trousers giving its many supporters a chance to wear it again. A Collection of fashion and classic pieces with men’s and ladies options; available in 2 colours.

ladies raincoat page 64
Double breasted with a warm zip out liner and removable hood.

shirt & blouse collection pages 65-73
A collection of matching ladies and men’s business shirts made from our new 100% superfine cotton and cotton rich fabrics. Our easy care ladies blouses are made from micro-fibre polyesters.

menswear collection pages 74-84
A comprehensive collection of tailored corporate clothing for men. Suits in 2 or 3 button, plain or pleat trousers, waistcoats, overcoats and raincoats. All available in a large size range.

formal wear collection pages 85-89
A collection of timeless formal wear; Tailcoats, Tuxedo and black jacket with striped trouser. All tailored with the experience and expertise required for the demanding formal environment.

index pages 90-91



“At Brook Taverner we have only one guiding principle; that all wearers of corporate clothing are confident and professional when they wear their clothing at work.”



Brook Taverner is Europe's most successful supplier of corporate tailoring. Started in 1912, Brook Taverner has a history of producing both fine fabrics and tailored clothing. We use some of the finest mills and factories in the world and we ensure that all our clothing is made in ethically sound factories.

- Teflon fabric protector to a stock collection
- Lycra stretch to a stock collection
- Stretch waistbands to a stock collection
- Fashion led designs
- Petite and tall fittings

The truth is we have a passion for fabrics and tailoring that sometimes borders on the obsessive. This is matched by an obsession for detail and garment performance. These qualities are only part of the story; to support our passion for tailoring we have a purpose built 140,000sq ft warehouse and office that carries over £2m of corporate wear stock, ensuring a fast delivery.

These are just a few of the innovations. Brook Taverner also stock more washable tailoring than any other supplier of Corporate tailoring. Brook Taverner has fashion trouser options as well as classic designs. All in all the “wardrobes” and Brook Taverner Business Collection offers the wearer greater choice, superior quality and whilst we are sure you can buy cheaper, we are equally sure you can't buy better value. We hope you are as passionate about what you wear as we are about what we design, manufacture and supply. Enjoy your Corporate Clothing.

We are not content to redesign the same old corporate clothing; we like innovation allied to quality design and manufacture, that's why Brook Taverner was the first to introduce:

Brook Taverner work with experienced, professional Corporate clothing suppliers – you probably received this brochure from one of them – use this brochure and ask their advice to ensure you have a successful corporate clothing experience.

Invest in tried and tested & tested & tested quality corporate clothing

Before any of our clothes are sold we put them through an intense laboratory testing regime; more importantly we ask a number of wearers to take them home and wash and wear them to destruction. Only if they pass 6 months of rigorous testing do they become part of the “wardrobes” & Brook Taverner Business Collection. After nearly 100 years of building a good name we won’t spoil it by taking short cuts.



The “wardrobes” and Brook Taverner business collections offer distinct capsule collections to satisfy your Corporate clothing demands.

Somewhere in this brochure there is a solution for you;

Pages 8 - 63 of the brochure are dedicated to the 5 “wardrobes” & Brook Taverner Business Collections. Each capsule collection consists of deliciously fashionable and timeless classic pieces. Each collection offers something different; 5 different fabrics; different levels of performance, different designs and a choice between washable tailoring and dry clean tailoring. Enough flexibility to ensure all wearers feel confident & professional at work.

Pages 65 - 73 showcases blouses and shirts; a small but perfectly formed collection. This includes a collection of matching men’s and ladies business shirts.

Pages 74 – 84 contains the men’s corporate tailoring collection (if you are only after men’s clothing you can skip straight to these pages) A comprehensive collection of suits, blazers, trousers, overcoats and raincoats.

Pages 85 – 89 is where you will find a wonderful collection of Formal Tailoring and Eveningwear; Tailcoat, lounge jacket, dress jacket and tuxedo. All essential items for the well dressed formal environment.

“Understand the impression you want your business to make; then tailor your corporate wardrobe accordingly.”

Important steps to choosing the right collection:

1. Choose the weight and durability of the fabric required for your corporate clothing
2. Choose a colour and style you want
3. Decide if you want Dry Clean, Easycare or Washable Tailoring?
4. Give yourself time to get it right; build in time for fittings etc; then set a date for your team to start wearing their wonderfully tailored new clothing
5. Most important: Choose your supplier carefully, get references and ask about levels of stock and their experience in the supply of corporate tailoring.

Fabrics (tested in the lab; more importantly rigorously tested on real people at their place of work)

Great clothing made from wonderful fabric. At Brook Taverner we keep it simple; we choose fine yarns, densely woven and finished to industry leading standards for all our Corporate Clothing. Sounds simple? But so many corporate clothing producers don’t do it. Why? Finer yarns cost more and the more densely woven the fabric the more of those expensive yarns you use. The benefit of a densely woven fabric is performance, greater crease recovery, greater abrasion resistance, increased comfort, less piling and beautiful looks. Brook Taverner believes it is worth a little more effort and expense to use finely woven fabrics; we hope you agree.

The introduction to each collection describes the fabric used for that collection; use this description to help decide which capsule collection is best for you. Seek the advice of a professional clothing supplier like the one who sent you this brochure.

Choosing a style:

Because of the different style requirements of individual wearers, the “wardrobes” and Brook Taverner Business Collections offer a choice of styles in each collection. Style matters; it can flatter and enhance our finer features. Get the most from your clothing; choose styles that flatter each wearer. Shorter wearers may choose styles that enhance their height, heavy wearers a style that is slimming. Good tailoring is all about making us mere mortals look great and feel confident.

Colour:

Choose a colour that is professional and flatters most shapes and skin tones; namely Navy, Grey, Black in either plain or with a stripe or pattern. Navy has always been a staple part of corporate dress and is easy to accessorise; try a Navy with a multi stripe for a change. Black is always striking and looks modern and stylish when worn in the right environment and with complementary accessories. Charcoal is back (it never went away in France) in plain and pinstripe and looks great with whites, blacks, lilacs and those beautiful pink shirts and blouses. If in doubt keep colours sympathetic (Navy suit/blue shirt). If it works try contrasting colours (Navy suit/pink and blue stripe shirt).

How many?

Ideally you should never wear the same jacket and trousers on consecutive days. You should have a minimum of 2 jackets and 3 trousers/skirts & 5 shirts/blouses (Don’t buy skirts if you only wear trousers, buy another trouser instead) rotate your garments every day. At the end of each day brush your jacket and hang it up – on a good hanger - with space around the garment; Brook Taverner garments are made from fine fabrics and will benefit from having space to breath.

Aftercare:

Dry Clean, Easycare or machine washable tailoring? The choice has never been greater. Choose from the largest collection of washable tailoring available. Which ever option is chosen the clothing will give great service if the care instructions are followed.

Updates:

Keep your clothing up to date by introducing a new style of trouser or jacket on a regular basis. This keeps wearers happy and freshens up the corporate look.





corporate fashion collection

corporate fashion collection
Wonderfully tailored fashionable clothing you can machine wash!
Tailored from a superfine Polyester/Wool/Lycra fabric that feels great and has a wonderful drape. This high performance, fashionable and lightweight collection is a welcome addition to the comprehensive business collections.

A 13 piece collection with high fashion and some classic pieces that will suit nearly all wearers. Choose from 4 jackets, 2 trousers, 3 skirts and a ladies waistcoat with matching menswear available in a 2 button jacket with a plain front trouser and waistcoat.


Fabric:	67% Polyester, 30% Wool, 3% Lycra Weft stretch
Weight:	270 Grams per linear metre
Performance:	Grade 4/5 piling. Taken to 50,000 rubs on a Martindale test with no threads breaking
Shrinkage:	Negligible
Aftercare:	Machine Washable or Dry Clean


A new collection offering fresh fashionable style and the convenience of Machine Washable tailored clothing.


Ideal for almost all customer facing staff. This is a fashionable, lightweight superbly tailored collection of professional clothing. Ideal for boutique hotels, retail and travel companies, bars and restaurants and all professionals who want to create a vibrant corporate image.

Washcare Instructions

For the best results, the wash bag should always be used when washing these garments.

Preparation 
Lay the trousers or skirt full length and flat in the wash bag. Lay the jacket flat and allow the arms to fall onto the front of the jacket. Place garments into the washbag, seal and fold in half.

Washing 
Ensure that the suit is washed seperately & machine wash as wool. Garments will need removing immediately from the machine when the cycle has ended.

Drying 
Place the jacket back on the hanger, shake gently and re-shape by gently straightening seams. Fold the trousers to the front creases and hang over the bar on garment hanger. Allow both garments to dry naturally & keep away from direct heat. Do not tumble dry.

Finishing 
If required, press the garments using a cool iron over a damp cloth.



Giglio Jacket, 2 button jacket. Machine washable.
Giglio Trouser, flat front trouser. Machine washable.

Aprilla Jacket, 1 button jacket. Machine washable.
Andretta Trouser, flared leg, front fastening. Machine washable.



Aprilla Jacket, 1 button jacket.
Machine washable.
Andretta Trouser, flared leg, front fastening.
Machine washable.



Giglio Jacket, semi fitted,
2 button jacket.
Machine washable.
Giglio Trouser, flat front.
Machine washable.

Few items of dress are as emotive as shoes.

They can instantly undermine your appearance. Choose a pair of shoes that complement your suit. Men: you can't go wrong with black Gibsons or Brogues with a Black, Navy or Charcoal suit. A classy dark aged brown leather brogue can be worn with your suit but it is less conventional.





Como Jacket, 3 button jacket with rounded lapel and pockets.
Machine washable.
Adria Skirt, flared A-line skirt. Machine washable.

Bella Jacket, double breasted 2 button jacket. Machine washable
Andretta Trouser, flared leg, front fastening. Machine washable.



All good tailoring

deserves the appropriate accessories. Make the most of your new tailored clothing by adding the right shoes, belt, cufflinks, watch, earrings, necklace, tights/stockings, and underwear. In general terms all jewellery should be discreet and understated.





Diamante Jacket, 3 button classic jacket. Machine washable.
 Bardolino Trouser, parallel leg, flat front, side zip. Machine washable.

Andretta Trouser, flared leg, front fastening.
 Machine washable.

Bardolino Trouser, parallel leg, flat front, side zip.
 Machine washable.



Bardolino Trouser, front detail.



Bergamo Waistcoat, 4 button cloth backed waistcoat.
 Machine washable.



Andretta Trouser, back detail.



Andretta Trouser, front detail.

Matrice Skirt, straight skirt, centre vent, fully lined.
Machine washable.



Ballino, longline skirt, centre vent front and back.
Machine Washable.



Adria Skirt, flared A-line skirt. Machine washable.



Giglio Trousers, flat front. Machine washable.



Bari Waistcoat, cloth backed, 5 button. Machine washable.



I corporate fashion collection

Wonderfully tailored fashionable clothing you can machine wash! Tailored from a superfine Polyester/Wool/Lycra fabric that feels great and has a wonderful drape. This high performance, fashionable and lightweight collection is a welcome addition to the comprehensive business collections.

A 13 piece collection with high fashion and some classic pieces that will suit nearly all wearers. Choose from 4 jackets, 2 trousers, 3 skirts and a ladies waistcoat with matching menswear available in a 2 button jacket with a plain front trouser and waistcoat.

Fabric: 67% Polyester, 30% Wool, 3% Lycra Weft stretch
Weight: 270 Grams per linear metre
Performance: Grade 4/5 piling. Taken to 50,000 rubs on a Martindale test with no threads breaking
Shrinkage: Negligible
Aftercare: Machine Washable or Dry Clean

A new collection offering fresh fashionable style and the convenience of Machine Washable tailored clothing.

Ideal for almost all customer facing staff. This is a fashionable, lightweight superbly tailored collection of professional clothing. Ideal for boutique hotels, retail and travel companies, bars and restaurants and all professionals who want to create a vibrant corporate image.

Colours available

Fabric: 67% Polyester, 30% Wool, 3% Lycra (weft stretch)



A - navy



B - navy multi stripe



D - black



E - black multi stripe

Styles available



APRILLA Jacket (*a pa preel ah*)
Single Breasted Jacket
double breasted lapel, edge stitched, 1 button front, centre vent. Machine washable.

fabric 67% polyester, 30% wool, 3% lycra

2184A Navy
2184B Navy multi stripe
2184D Black
2184E Black multi stripe



BELLA Jacket (*Bell ah*)
Double Breasted Jacket
2 x 2 button front. Machine washable.

fabric 67% polyester, 30% wool, 3% lycra

2185A Navy
2185B Navy multi stripe
2185D Black



COMO Jacket (*co. mo*)
Single Breasted Jacket
3 button front. Machine washable.

fabric 67% polyester, 30% wool, 3% lycra

2186A Navy
2186B Navy multi stripe
2186D Black
2186E Black multi stripe



DIAMANTE Jacket (*Dia man tay*)
Single Breasted Jacket
3 button front. Machine washable.

fabric 67% polyester, 30% wool, 3% lycra

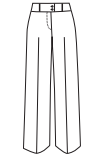
2187A Navy
2187B Navy multi stripe
2187D Black
2187E Black multi stripe



BERGAMO Waistcoat (*Bear gam oh*)
Cloth Backed Waistcoat
4 button front, 2 welt pockets. Machine washable.

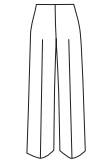
fabric 67% polyester, 30% wool, 3% lycra

2192A Navy
2192B Navy multi stripe
2192D Black
2192E Black multi stripe



ANDRETTA Trousers (*An dret ah*)
Flared Leg Trousers
front fastening, low waist. Machine washable.

2188A Navy
2188B Navy multi stripe
2188D Black
2188E Black multi stripe



BARDOLINO Trousers (*Bar da lean oh*)
Straight Leg Trousers
concealed side zip fastening. Machine washable.

2189A Navy
2189B Navy multi stripe
2189D Black
2189E Black multi stripe



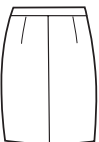
ADRIA Skirt (*Add wree ah*)
Flared A-line Skirt. Machine washable.

2190A Navy
2190B Navy multi stripe
2190D Black
2190E Black multi stripe



BALLINO Skirt (*Bal een oh*)
Longline Skirt. 14" centre vent front and back. Machine washable.

2191A Navy
2191B Navy multi stripe
2191D Black
2191E Black multi stripe



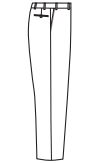
MATRICE Skirt (*Mat ric e*)
Straight Skirt
centre vent, fully lined. Machine washable.

2201B Navy multi stripe
2201E Black multi stripe



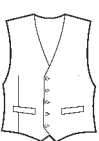
GIGLIO Jacket (*G lee oh*)
Single Breasted Jacket
semi fitted, 2 button front, side vents. Machine washable.

5678A Navy
5678B Navy multi stripe
5678D Black
5678E Black multi stripe



GIGLIO Trousers (*G lee oh*)
Flat Front Trousers. Machine washable.

8431A Navy
8431B Navy multi stripe
8431D Black
8431E Black multi stripe



BARI Waistcoat (*Bar ee*)
Waistcoat
cloth backed 5 button waistcoat. Machine washable.

1072A Navy
1072B Navy multi stripe
1072D Black
1072E Black multi stripe



Nanotech operates at a molecular level for life

- Water and oil repellent
- Durability
- Crease recovery

Recommended washing instructions for nanotech:
Wash following garment care label. Steam ironing will enhance performance. Dry sheet fabric softeners are recommended not liquid softeners.



Adds comfort, movement and crease recovery

I corporate fashion collection

Size range available

Wardrobes - Ladies Wear

Jackets: Diamante

6 - 16 petite
6 - 24 regular
10 - 24 long

Jackets: Como

6 - 16 petite
6 - 24 regular
8 - 18 long

Jackets: Bella & Aprilla

6 - 16 petite
6 - 18 regular
10 - 18 long

Trousers

6 - 24
in leg lengths 27", 29", 31", 33" & 36"
unfinished

A-Line Skirts

6 - 24 regular
8 - 24 long

Longline Skirts

6 - 24 regular
10 - 24 long

Straight Skirts

6 - 16 short
6 - 24 regular
10 - 24 long

Waistcoat: Bergamo

6 - 24 regular

Brook Taverner - Menswear

Jacket: Giglio

36 - 50 regular
36 - 48 short
38 - 48 long

Trousers: Giglio

28 - 48
in leg lengths 29.5", 31.5", 33" & 36"
unfinished

Waistcoat: Bari

36 - 50 regular

Washcare Instructions

For the best results, the wash bag should always be used when washing these garments.

Preparation

Lay the trousers or skirt full length and flat in the wash bag. Lay the jacket flat and allow the arms to fall onto the front of the jacket. Place garments into the washbag, seal and fold in half.

Washing

Ensure that the suit is washed separately & machine wash as wool. Garments will need removing immediately from the machine when the cycle has ended.

Drying

Place the jacket back on the hanger, shake gently and re-shape by gently straightening seams. Fold the trousers to the front creases and hang over the bar on garment hanger. Allow both garments to dry naturally & keep away from direct heat. Do not tumble dry.

Finishing

If required, press the garments using a cool iron over a damp cloth.



sophisticated collection

Europe's finest washable clothing! Tailored from the finest wool with Lycra fabric available from any corporate clothing supplier. This high performance but lightweight collection is worn by thousands of demanding wearers and the satisfaction rating is the highest Brook Taverner has ever recorded.

A 16 piece collection with fashion and classic pieces to suit all wearers. Choose from 5 jackets, 3 trousers, 2 skirts and a waistcoat with matching menswear available in 2 and 3 button jackets with pleated and plain front trousers and a men's waistcoat.

Fabric:	54% Polyester, 44% Wool, 2% Lycra Weft stretch
Weight:	270 Grams per linear metre
Performance:	Grade 4/5 piling. Taken to 45,000 rubs on a Martindale test with no threads breaking
Shrinkage:	Negligible
Aftercare:	Machine Washable or Dry Clean

Europe's most successful collection of Corporate Tailoring is now enjoying its 5th successful year. Recent introductions like the Avalino two button mens jacket, Miranda low waist fashion trouser for women and the ability to wash the jackets has helped maintain its huge popularity.

Ideal for almost all customer facing staff. This is a sophisticated, lightweight superbly tailored collection of professional clothing. Ideal for hotels, bars, casinos, retail and travel and any business that is prepared to pay a little bit more to create a sophisticated business image.

Washcare Instructions

For the best results, the wash bag should always be used when washing these garments.

Preparation



Lay the trousers or skirt full length and flat in the wash bag. Lay the jacket flat and allow the arms to fall onto the front of the jacket. Place garments into the washbag, seal and fold in half.

Washing



Ensure that the suit is washed seperately & machine wash as wool. Garments will need removing immediately from the machine when the cycle has ended.

Drying



Place the jacket back on the hanger, shake gently and re-shape by gently straightening seams. Fold the trousers to the front creases and hang over the bar on garment hanger. Allow both garments to dry naturally & keep away from direct heat. Do not tumble dry.

Finishing



If required, press the garments using a cool iron over a damp cloth.



Avalino Jacket, mens 2 button semi fitted jacket with side vents and slant pockets. Machine washable.
Avalino Trouser, flat front trousers. Machine washable.

Susa Jacket, 3 button jacket with rounded lapel and pockets. Machine washable.
Miranda Trouser, lower waisted flared trouser with 2 button waistband and false hip pockets. Machine washable.

Avalino Jacket, semi fitted, 2 button jacket. Machine washable.
Avalino Trouser, flat front trousers. Machine washable.
Trafalgar Shirt, (see page 71) long sleeve. Machine washable.



Susa Jacket, 3 button jacket with rounded lapel and pockets. Machine washable.
Miranda Trouser, lower waisted flared trouser with 2 button waistband and false hip pockets.
Machine washable.



Asti Jacket, 1 button jacket, double breast lapel with hand edge stitching, 2 slant flap pockets.
Machine washable.

Varese Trouser, parallel leg trouser.
Machine washable.



Grooming is essential to any good business appearance.

Before you even put on your beautifully tailored corporate clothing make sure your personal appearance lets the world know you are a success. You will look great with clean hair and well manicured hands. Ensure that your make up is fresh and business like.

Monza Jacket, 5 button jacket, with concealed fastening.
Machine washable.

Assisi Skirt, longline skirt, centre vent front and back.
Machine washable.





Catania Jacket, 3 button jacket, 2 slanted flap pockets.
Machine washable.
Ascoli Trouser, flat front trousers, side fastening.
Machine washable.

Avola Jacket, 5 button jacket, longline with collar.
Anzio Skirt, straight skirt, centre vent. Machine washable.

There may be a need to carry things at work but few things disrupt the well tailored professional look more than bulging pockets.

Wallets, cigarettes, loose change, i-pods, mobile phone, they all pull your clothing out of shape. They also dirty your clothes and wear your pockets out very quickly. Keep the clutter to a minimum and put it in a bag or locker.



Imola Jacket, 3 button jacket. Machine washable.
Imola Trouser, single pleat trousers. Machine washable.

Avalino Trouser, flat front trousers. Machine washable.



Busso Waistcoat, cloth backed waistcoat, 5 button front, 2 welt pockets



Imola Trouser, single pleat trousers. Machine washable.

Miranda Trouser, flared trouser, front fastening, low waist with 1 waistband pocket, mock hip pockets. Machine washable.



Scapoli Waistcoat, cloth backed, 4 button waistcoat, 2 welt pockets. Machine washable.
Solaro Blouse, long sleeve ladies shirt. (see page 66).

Varese Trouser, parallel leg trouser. Machine washable.



Ascoli Trouser, flat front trouser. Machine washable.



Anzio Skirt, straight skirt, centre vent, fully lined. Machine washable.



Assisi Skirt, longline skirt 14" centre vent front and back, fully lined. Machine washable.



Isophisticated collection

Europe's finest washable clothing! Tailored from the finest wool with Lycra fabric available from any corporate clothing supplier. This high performance but lightweight collection is worn by thousands of demanding wearers and the satisfaction rating is the highest Brook Taverner has ever recorded.

A 16 piece collection with fashion and classic pieces to suit all wearers. Choose from 5 jackets, 3 trousers, 2 skirts and a waistcoat with matching menswear available in 2 and 3 button jackets with pleated and plain front trousers and a men's waistcoat.

Fabric: 54% Polyester, 44% Wool, 2% Lycra Weft stretch
Weight: 270 Grams per linear metre
Performance: Grade 4/5 piling. Taken to 45,000 rubs on a Martindale test with no threads breaking
Shrinkage: Negligible
Aftercare: Machine Washable or Dry Clean

Europe's most successful collection of Corporate Tailoring is now enjoying its 5th successful year. Recent introductions like the Avalino two button mens jacket, Miranda low waist fashion trouser for women and the ability to wash the jackets has helped maintain its huge popularity.

Ideal for almost all customer facing staff. This is a sophisticated, lightweight superbly tailored collection of professional clothing. Ideal for hotels, bars, casinos, retail and travel and any business that is prepared to pay a little bit more to create a sophisticated business image.

Colours available

Fabric: 54% Polyester, 44% Wool, 2% Lycra (weft stretch)



A - navy



B - navy pinstripe



C - charcoal



D - black



F - Charcoal pinstripe

Styles available



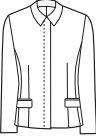
SUSAJacket (*Sues ah*)
3 Button Jacket with rounded lapel and pockets.
Machine washable.

2179A Navy
2179B Navy pinstripe
2179C Charcoal
2179D Black
2179F Charcoal pinstripe



ASTIJacket (*Ass tea*)
Single Breasted Jacket
1 Button front, double breast lapel with hand edged stitching, 2 slanted flap pockets, 1 inside pocket, no vents. Machine washable.

2178A Navy
2178B Navy pinstripe
2178C Charcoal
2178D Black
2178F Charcoal pinstripe



MONZAJacket (*Mon sah*)
Short Fly-Front Jacket
5 Button front, concealed fastening, 1 inside pocket, Machine washable.

2177A Navy
2177B Navy pinstripe
2177C Charcoal
2177D Black
2177F Charcoal pinstripe



CATANIA Jacket (*Cat arm e ah*)
Single Breasted Jacket
3 button front, 2 slanted flap pockets, 1 inside pocket, no vents. Machine washable.

2176A Navy
2176B Navy pinstripe
2176C Charcoal
2176D Black
2176F Charcoal pinstripe



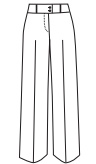
AVOLA Jacket (*a (pa) vole ah*)
Single Breasted Jacket
5 Button front, longline with collar, 2 slanted flap pockets, 1 inside pocket, centre vent.

2180A Navy
2180B Navy pinstripe
2180C Charcoal
2180D Black



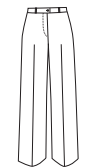
SCAPOLI Waistcoat
Cloth backed waistcoat, 4 button front, 2 welt pockets
Machine washable.

2200A Navy
2200B Navy pinstripe
2200C Charcoal
2200D Black
2200F Charcoal pinstripe



MIRANDA Trousers (*Mi rand ah*)
Flared Trouser
Front fastening, low waist, 1 waistband pocket, mock hip pockets. Machine washable.

2181A Navy
2181B Navy pinstripe
2181C Charcoal
2181D Black
2181F Charcoal pinstripe



VARESE Trousers (*Vah raise eh*)
Parallel Leg Trouser. 1 waistband pocket.
Machine washable.

2109A Navy
2109B Navy pinstripe
2109C Charcoal
2109D Black
2109F Charcoal pinstripe



ASCOLI Trousers (*Ass cole e*)
Flat Front Trousers. 1 waistband pocket.
Machine washable.

2175A Navy
2175B Navy pinstripe
2175C Charcoal
2175D Black
2175F Charcoal pinstripe



ANZIOSkirt (*Ants e o*)
Straight Skirt
Centre vent, fully lined. Machine washable.

2113A Navy
2113B Navy pinstripe
2113C Charcoal
2113D Black
2113F Charcoal pinstripe



ASSISISkirt (*A cease e*)
Longline Skirt
14" Centre vent front & back, fully lined.
Machine washable.

2112A Navy
2112B Navy pinstripe
2112C Charcoal
2112D Black
2112F Charcoal pinstripe



IMOLAJacket (*E mole ah*)
Single Breasted Jacket
3 button jacket, centre vent, 4 inside pockets.
Machine washable.

5646A Navy
5646B Navy pinstripe
5646C Charcoal
5646D Black
5646F Charcoal pinstripe



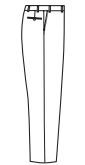
IMOLA Trousers (*E mole ah*)
Single Pleat Trousers. Machine washable.

8314A Navy
8314B Navy pinstripe
8314C Charcoal
8314D Black
8314F Charcoal pinstripe



AVALINO Jacket (*ave a (pa) lean oh*)
Single Breasted Jacket
2 button jacket, side vents, 4 inside pockets.
semi fitted jacket. Machine washable.

5647A Navy
5647B Navy pinstripe
5647C Charcoal
5647D Black
5647F Charcoal pinstripe



AVALINO Trousers (*ave a (pa) lean oh*)
Flat Front Trousers. Machine washable.

8387A Navy
8387B Navy pinstripe
8387C Charcoal
8387D Black
8387F Charcoal pinstripe



BUSO Waistcoat (*Bu sso*)
Cloth backed waistcoat, 5 button front, 2 welt pockets
Machine washable.

1074A Navy
1074B Navy pinstripe
1074C Charcoal
1074D Black
1074F Charcoal pinstripe



Nanotech operates at a molecular level for life

- Water and oil repellent
- Durability
- Crease recovery

Recommended washing instructions for nanotech: Wash following garment care label. Steam ironing will enhance performance. Dry sheet fabric softeners are recommended not liquid softeners.



Adds comfort, movement and crease recovery

Isophisticated collection

Size range available

Wardrobes - Ladies Wear

Jackets: Catania

6 - 16 petite
6 - 24 regular
10 - 24 long

Jackets: Monza

6 - 16 petite
6 - 24 regular
10 - 18 long

Jackets: Susa

6 - 16 petite
6 - 24 regular
8 - 18 long

Jackets: Asti

6 - 16 petite
6 - 18 regular
10 - 18 long

Jackets: Avola

6 - 24 regular

Trousers

6 - 24

in leg lengths 27", 29", 31", 33" & 36"
unfinished

Skirts

6 - 16 short
6 - 24 regular
8 - 24 long

Longline Skirts

6 - 24 regular
10 - 24 long

Waistcoats

6 - 24 regular

Brook Taverner - Menswear

Jackets

36 - 50 regular
36 - 48 short
38 - 48 long

Trousers: Imola

28 - 48
in leg lengths 29.5", 31.5", 33" & 36"
unfinished

Trousers: Avalino

28 - 44
in leg lengths 29.5", 31.5", 33" & 36"
unfinished

Waistcoats

36 - 50 regular

Washcare Instructions

For the best results, the wash bag should always be used when washing these garments.

Preparation

Lay the trousers or skirt full length and flat in the wash bag. Lay the jacket flat and allow the arms to fall onto the front of the jacket. Place garments into the washbag, seal and fold in half.

Washing

Ensure that the suit is washed separately & machine wash as wool. Garments will need removing immediately from the machine when the cycle has ended.

Drying

Place the jacket back on the hanger, shake gently and re-shape by gently straightening seams. Fold the trousers to the front creases and hang over the bar on garment hanger. Allow both garments to dry naturally & keep away from direct heat. Do not tumble dry.

Finishing

If required, press the garments using a cool iron over a damp cloth.



| performance collection

Tailored from a superfine but incredibly strong Polyester/Wool Blend fabric; the “Performance Collection” offers unrivalled performance whilst maintaining all of the sophistication and style that the Brook Taverner & “wardrobes” Business Collections have become famous for.

This 11 piece collection offers something for all wearers from highly fashionable styles to more classic styles. Choose from 3 ladies jackets and a choice of 2 trousers and 2 skirts and a waistcoat with a matching men’s suit and waistcoat; all available in 4 colours.

Fabric:	55% Polyester, 45% Wool Plain weave
Weight:	340 grams per linear metre
Performance:	Grade 4/5 piling. Taken to 60,000 rubs on a Martindale test without any threads breaking (retail tests normally stop at 18,000 rubs)
Shrinkage:	Negligible
Aftercare:	Dry Clean Only

The Performance Collection has been sold successfully to hundreds of business users throughout Europe for the last two years. The customer satisfaction ratings are excellent with below 0.01% adverse reaction of any description.

This weight of fabric is ideal for outside wear and environments that require extremely durable corporate clothing.

Ortona Jacket, 3 button jacket.
Ortona Trousers, single pleat trousers.

Brindisi Jacket, 1 button jacket, double breast lapel with hand edged stitching.
Vercelli Trousers, parallel leg trousers.



Ortona Jacket, 3 button jacket.
Ortona Trouser, single pleat trouser.



Brindisi Jacket, 1 button jacket, double breast lapel with hand edged stitching.
Vercelli Trouser, parallel leg trouser.



Elba Jacket, 2 button short jacket.
Sabini Skirt, straight skirt.

Elba Jacket, 2 button short jacket.
Sienna Skirt, longline skirt.



Ovada Jacket, 3 button jacket.
Ravenna Trouser, flat front trouser.



Perugia Waiscoat,
Cloth backed,
5 button waistcoat.



Vercelli Trouser, parallel leg trouser.
Sicilia Stretch Top, (see page 72).



Ravenna Trouser, flat front trouser.
Sicilia Stretch Top, (see page 72).



Sabini Skirt, straight skirt.



Sienna Skirt, longline skirt 14" centre vent front and back.



Ortona Trouser, single pleat trouser.
Chelsea Shirt, Oxford weave (see page 73).



Cagliari Waistcoat, cloth backed, 5 button waistcoat.
Trafalgar Shirt, (see page 71).



performance collection

Tailored from a superfine but incredibly strong Polyester/Wool Blend fabric; the “Performance Collection” offers unrivalled performance whilst maintaining all of the sophistication and style that the Brook Taverner & “wardrobes” Business Collections have become famous for.

This 11 piece collection offers something for all wearers from highly fashionable styles to more classic styles. Choose from 3 ladies jackets and a choice of 2 trousers and 2 skirts and a waistcoat with a matching men’s suit and waistcoat; all available in 4 colours.

Fabric:	55% Polyester, 45% Wool Plain weave
Weight:	340 grams per linear metre
Performance:	Grade 4/5 piling. Taken to 60,000 rubs on a Martindale test without any threads breaking (retail tests normally stop at 18,000 rubs)
Shrinkage:	Negligible
Aftercare:	Dry Clean Only

The Performance Collection has been sold successfully to hundreds of business users throughout Europe for the last two years. The customer satisfaction ratings are excellent with below 0.01% adverse reaction of any description.

This weight of fabric is ideal for outside wear and environments that require extremely durable corporate clothing.

Colours available

Fabric: 55% Polyester, 45% Wool Plain weave



A - navy



B - navy shadow stripe



C - charcoal



D- black

Styles available



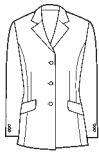
BRINDISI Jacket (*Brin las in ‘in’ deasy*)
Single Breasted Jacket
1 button front, double breast lapel with hand edged stitching, 2 slanted flap pockets, 1 inside pocket, no vents.

2138A Navy
2138B Navy shadow stripe
2138C Charcoal
2138D Black



ELBA Jacket (*Elle bah*)
Short Jacket
2 button front, 2 jetted pockets, 1 inside pocket, centre vent.

2137A Navy
2137B Navy shadow stripe
2137C Charcoal
2137D Black



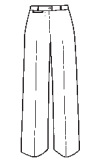
OVADA Jacket (*O var dah*)
Single Breasted Jacket
3 button front, 2 jetted and flap pockets, 1 inside pocket, no vents.

2135A Navy
2135B Navy shadow stripe
2135C Charcoal
2135D Black



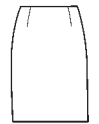
RAVENNA Trousers (*Wra ven ah*)
Flat Front Trousers

2140A Navy
2140B Navy shadow stripe
2140C Charcoal
2140D Black



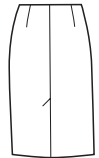
VERCELLI Trouser (*Vair chelly*)
Parallel Leg Trouser

2139A Navy
2139B Navy shadow stripe
2139C Charcoal
2139D Black



SABINI Skirt (*Sa beany*)
Straight Skirt

2142A Navy
2142B Navy shadow stripe
2142C Charcoal
2142D Black



SIENNA Skirt (*Sea n ah*)
Longline skirt

2141A Navy
2141B Navy shadow stripe
2141C Charcoal
2141D Black



PERUGIA Ladies (*Pear ou gia*)
Cloth backed, 5 button waistcoat.

2171A Navy
2171D Black



ORTONA Jacket (*Or tone ah*)
Single Breasted Jacket
3 button jacket, centre vent, 4 inside pockets.

5495A Navy
5495B Navy shadow stripe
5495C Charcoal
5495D Black



ORTONA Trouser (*Or tone ah*)
Single Pleat Trousers

8374A Navy
8374B Navy shadow stripe
8374C Charcoal
8374D Black



CAGLIARI Mens (*Ca-lea-ri*)
Cloth backed, 5 button waistcoat.

1109A Navy
1109D Black

performance collection

Size range available

Wardrobes - Ladies Wear

Jackets: Ovada

6 - 16 petite
6 - 24 regular
10 - 24 long

Jackets: Elba

6 - 16 petite
6 - 24 regular
10 - 18 long

Jackets: Brindisi

6 - 16 petite
6 - 18 regular
10 - 18 long

Trousers

6 - 24
in leg lengths 27”, 29”, 31”, 33” & 36” unfinished

Skirts

6 - 16 short
6 - 24 regular
8 - 24 long

Longline Skirts

6 - 24 regular
10 - 24 long

Waistcoat: Perugia

6 - 24 regular

Brook Taverner - Menswear

Jacket: Ortona

36 - 50 regular
36 - 48 short
38 - 48 long

Trouser: Ortona

28 - 48
in leg lengths 29.5”, 31.5”, 33” & 36” unfinished

Waistcoat: Cagliari

36 - 50 regular



*easycare
collection*

| easycare collection
Tailored from the finest Microfibre Polyester this is the ultimate in sophisticated Easycare Corporate Tailoring.

New styles and a beautiful new lining, make this extremely popular collection even stronger.

This 8 piece collection offers something for all female (note we consider this fabric unsuitable for men's trousers) wearers from highly fashionable styles to more classic ones. Choose from 3 jacket styles, 3 trouser styles and 2 skirts; all available in 3 colours.


Easycare means just that: Easy care! Just wash your clothes at 40° put them on a hanger to dry and they are ready to wear in 2 hours. Wearers love the convenience of this lightweight ultra Easycare collection.


Fabric:	100% Polyester. (Superfine Microfibre Polyester; A technical fabric that shouldn't be confused with standard gauge Polyesters)
Weight:	280 Grams per linear metre
Performance:	Grade 4/5 Piling (no piling equals a grade 5) Martindale Abrasion test taken to 50,000 rubs with no threads breaking
Shrinkage:	Negligible
Aftercare:	Machine Washable or Dry Clean

The Easycare collection has been popular for more than 4 years. Thousands of wearers across Europe are successfully wearing the Easycare collection many are on their 2nd or 3rd issue.

Ideal for any office, travel or hotel environment where style with the convenience of Easycare is required.

Washcare Instructions

Washing 
Ensure that the suit is washed seperately & machine wash as wool Garments will need removing immediately from the machine when the cycle has ended.

Drying 
Place the jacket back on the hanger, shake gently and re-shape by gently straightening seams. Fold the trousers to the front creases and hang over the bar on garment hanger. Allow both garments to dry naturally & keep away from direct heat. Do not tumble dry.

Finishing 
If required, press the garments using a cool iron over a damp cloth.



- Wash at 40°
- Put on a hanger to dry
- Ready to wear in 2 hours

Altino Jacket, 2 button short jacket.
Barletta Trouser, parallel leg trouser.



Altino Jacket, 2 button short jacket. Machine washable.
Barletta Trouser, parallel leg trouser. Machine washable.



Borello Jacket, 3 button jacket. Machine washable.
Barletta Trouser, parallel leg trouser. Machine washable.



Diano Trousers, parallel leg, flat front, side zip.
Machine washable.



Barletta Trouser, parallel leg trouser, front fastening,
waistband pocket. Machine washable.



Alessandria Trousers, flared leg trouser,
front fastening, machine washable.

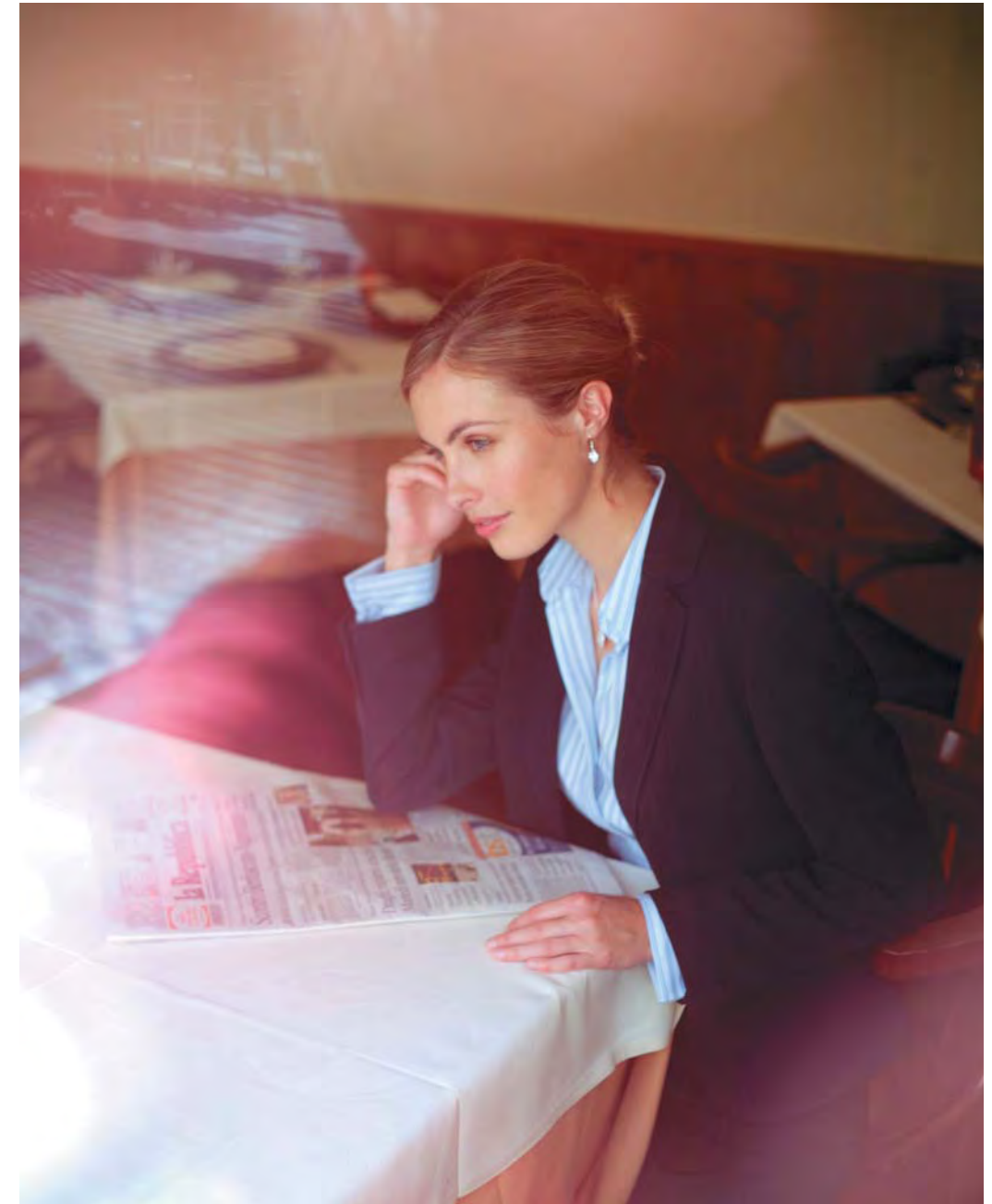
Calabria Jacket, 3 button classic jacket. Machine washable.
Diano Trousers, machine washable.



Trento Skirt, straight skirt. Machine washable.



Latina Skirt, longline skirt, side vents, fully lined. Machine washable.



The Easycare collection has been popular for more than 4 years. Thousands of wearers across Europe are successfully wearing the Easycare collection many are on their 2nd or 3rd issue. With new styles and improved trim featuring a terrific new lining the Easycare collection is now stronger than ever.



Easycare collection

Tailored from the finest Microfibre Polyester this is the ultimate in sophisticated Easycare Corporate Tailoring.

New styles and a beautiful new lining, make this extremely popular collection even stronger.

This 8 piece collection offers something for all female (note we consider this fabric unsuitable for men's trousers) wearers from highly fashionable styles to more classic styles. Choose from 3 jackets, 3 trousers and 2 skirts; all available in 3 colours.

Easycare means just that: Easy care! Just wash your clothes at 40° put them on a hanger to dry and they are ready to wear in 2 hours. Wearers love the convenience of this lightweight ultra Easycare collection.

Fabric:	100% Polyester. (Superfine Microfibre Polyester; A technical fabric that shouldn't be confused with standard gauge Polyesters)
Weight:	280 Grams per linear metre
Performance:	Grade 4/5 Piling (no piling equals a grade 5) Martindale Abrasion test taken to 50,000 rubs with no threads breaking
Shrinkage:	Negligible
Aftercare:	Machine Washable or Dry Clean

The Easycare collection has been popular for more than 4 years. Thousands of wearers across Europe are successfully wearing the Easycare collection many are on their 2nd or 3rd issue.

Ideal for any office, travel or hotel environment where style with the convenience of Easycare is required.

Colours available

Fabric: 100% Polyester (superfine Microfibre)



A - navy



B - black



D - navy pinstripe

Styles available



ALTINO Jacket (*Altin o*)
Single Breasted Jacket
2 Button front, single breast lapel with hand edged stitching, 2 flap pockets, 1 inside pocket, machine washable, no vent.
100% Polyester washable.
2202A Navy
2202B Black
2202D Navy pinstripe



BORELLO Jacket (*Bo rel lo*)
3 Button front, single breast lapel with hand edged stitching, 2 flap pockets, machine washable.
100% Polyester washable.
2203A Navy
2203B Black
2203D Navy pinstripe



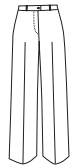
CALABRIA Jacket (*Ca lab ria*)
Single Breasted Jacket
3 button front, 2 flap pockets, 1 inside pocket, fully tailored, machine washable.
100% Polyester washable.
2204A Navy
2204B Black
2204D Navy pinstripe



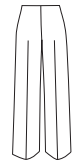
- Wash at 40°
- Put on a hanger to dry
- Ready to wear in 2 hours



ALESSANDRIA Trouser (*Ales san dria*)
Plain Front Flared Leg Trouser
Fly front, 2 button extension, fob pocket,
100% Polyester washable.
2193A Navy
2193B Black
2193D Navy pinstripe



BARLETTA Trousers (*Bar let ah*)
Plain Front Parallel Leg Trouser
Fly front fastening, belt loops, fob pocket,
100% Polyester washable.
2173A Navy
2173B Black
2173D Navy pinstripe



DIANO Trouser (*Di an oh*)
Flat Front Trousers
100% Polyester washable.
2205A Navy
2205B Black
2205D Navy pinstripe



LATINA Skirt (*La teen ah*)
Longline Skirt
Side vents, fully lined,
100% Polyester washable.
2087A Navy
2087B Black
2087D Navy pinstripe



TRENTO Skirt (*Trent oh*)
Straight Skirt
100% Polyester washable.
2086A Navy
2086B Black
2086D Navy pinstripe

Easycare collection

Size range available

Wardrobes - Ladies Wear

Jackets: Calabria

6 - 16 petite
6 - 24 regular
10 - 24 long

Jackets: Altino & Borello

6 - 16 petite
6 - 24 regular
10 - 18 long

Trousers

6 - 24
in leg lengths 27", 29", 31", 33" & 36" unfinished

Skirts

6 - 24
in lengths 19", 22" & 25"

Longline Skirts

6 - 24
in lengths 34" & 36"

Washcare Instructions

Washing

Ensure that the suit is washed seperately & machine wash as wool
Garments will need removing immediately from the machine when the cycle has ended.



Drying

Place the jacket back on the hanger, shake gently and re-shape by gently straightening seams. Fold the trousers to the front creases and hang over the bar on garment hanger. Allow both garments to dry naturally & keep away from direct heat. Do not tumble dry.



Finishing

If required, press the garments using a cool iron over a damp cloth.





bi-stretch collection

Tailored from a 60% Wool, 38% Poly and 2% Lycra fabric. The original high quality tailored collection. This collection set the standards that the rest tried to follow. The collection has been revitalized by the introduction of new jackets and trousers giving its many supporters a chance to wear it again.

A 8 piece Collection of fashion and classic pieces with men's and ladies options; choose from 2 ladies jackets, 2 skirts and 2 trouser with a matching men's jacket and trouser; all available in Navy and Navy Pinstripe.

Fabric:	60% Wool, 38% Polyester, 2% Lycra Bi-Stretch
Weight:	280 Grams per linear metre
Performance:	Grade 4/5 piling. Taken to 50,000 Rubs on a Martindale test with no threads Breaking
Shrinkage:	Negligible
Aftercare:	Dry Clean Only

Europe's most enduring collection of Tailored Corporate Clothing; for more than 10 years this fabric has proved popular with 1000's of satisfied wearers. This collection launched the "wardrobes" business collection by being the first Corporate stock collection to offer fashion in a fine Wool rich fabric with Teflon fabric protector and Lycra bi-stretch properties.



Adds comfort, movement and crease recovery



Teflon fabric protector provides an invisible shield against virtually all types of soil and stains



Warwick Jacket, 3 button jacket.
Warwick Trouser, single pleat.

Empoli Jacket, 2 button jacket.
Levanto Trouser, parallel leg trouser.



Warwick Jacket, single breasted 3 button jacket. Tailored in superb textured rib fabric with Lycra.
Warwick Trouser, single pleat trouser.
Bareggio Shirt, (see page 69)

Passionate about
tailoring

Empoli Jacket, 2 button jacket.
Levanto Trouser, parallel leg trouser.



Turin Jacket, 3 button jacket.
Verona Trouser, classic front trouser.

Turin Jacket, 3 button jacket.
Sorrento Skirt, straight skirt.



Sondrio Skirt, long line skirt, 14" centre vent front and back, stretch (comfort) waistband.



Sorrento Skirt, straight skirt. Centre vent, fully lined, stretch (comfort) waistband.



Levanto Trouser, parallel leg trouser, front fastening, low waist, 1 waistband pocket, stretch (comfort) waistband.
Sicilia Stretch Top, (see page 72).



Verona Trouser, classic front trouser, side zip fastening, stretch (comfort) waistband.



Warwick Trouser, single pleat trouser, stretch (comfort) waistband.



bi-stretch collection

Tailored from a 60% Wool, 38% Poly and 2% Lycra fabric. The original high quality tailored collection. This collection set the standards that the rest tried to follow. The collection has been revitalized by the introduction of new jackets and trousers giving its many supporters a chance to wear it again.

A 8 piece Collection of fashion and classic pieces with men's and ladies options; choose from 2 ladies jackets, 2 skirts and 2 trouser with a matching men's jacket and trouser; all available in Navy and Navy Pinstripe.

Fabric: 60% Wool, 38% Polyester, 2% Lycra Bi-Stretch
Weight: 280 Grams per linear metre
Performance: Grade 4/5 piling. Taken to 50,000 Rubs on a Martindale test with no threads Breaking
Shrinkage: Negligible
Aftercare: Dry Clean Only

Europe's most enduring collection of Tailored Corporate Clothing; for more than 10 years this fabric has proved popular with 1000's of satisfied wearers. This collection launched the "wardrobes" business collection by being the first Corporate stock collection to offer fashion in a fine Wool rich fabric with Teflon fabric protector and Lycra bi-stretch properties.

Colours available

Fabric: 60% Wool. 38% Polyester, 2% Lycra Bi-Stretch



A - navy



B - navy pinstripe

Styles available



EMPOLI Jacket (*Emp o l e*)
Single Breasted Jacket
2 button front, 2 slanted flap pockets, 1 inside pocket, centre vent.
2157A Navy
2157B Navy pinstripe



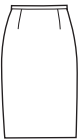
TURIN Jacket
Single Breasted Jacket
3 button front, 2 jetted & flap pockets, 1 inside pocket, no vents.
2067A Navy
2067B Navy pinstripe



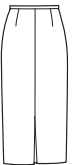
LEVANTO Trousers (*Lay vant oh*)
Parallel Leg Trousers
Front fastening, low waist, 1 waistband pocket, washable.
2158A Navy
2158B Navy pinstripe



VERONA Trousers (*Ver roan ah*)
Classic Front Trousers
2052A Navy
2052B Navy pinstripe



SORRENTO Skirt (*Sore rent oh*)
Straight Skirt
Centre Vent, fully lined, washable, stretch (comfort) waistband.
2053A Navy
2053B Navy pinstripe



SONDRIO Skirt (*Son drie oh*)
Long Line Skirt
2081A Navy
2081B Navy pinstripe



WARWICK Jacket
Single Breasted 3 Button Jacket
Sophisticated Tailoring Plain Back, 4 Inside Pockets. Tailored in a Superb Textured Rib Fabric with Lycra.
5177A Navy
5177B Navy pinstripe



WARWICK Trousers
Single Pleat
Half lined, belt loops, 1 hip pocket.
8164A Navy
8164B Navy pinstripe



Adds comfort, movement and crease recovery



Teflon fabric protector provides an invisible shield against virtually all types of soil and stains



bi-stretch

Size range available

Wardrobes - Ladies Wear

Jackets: Turin

6 - 16 petite
6 - 24 regular
10 - 24 long

Jackets: Empoli

6 - 16 petite
6 - 18 regular
10 - 18 long

Trousers

6 - 24
in leg lengths 27", 29", 31", 33" & 36" unfinished

Skirts

6 - 16 short
6 - 24 regular
10 - 24 long

Longline Skirts

6 - 24 regular
10 - 24 long

Brook Taverner - Menswear

Jackets

36 - 50 regular
36 - 48 short
38 - 48 long

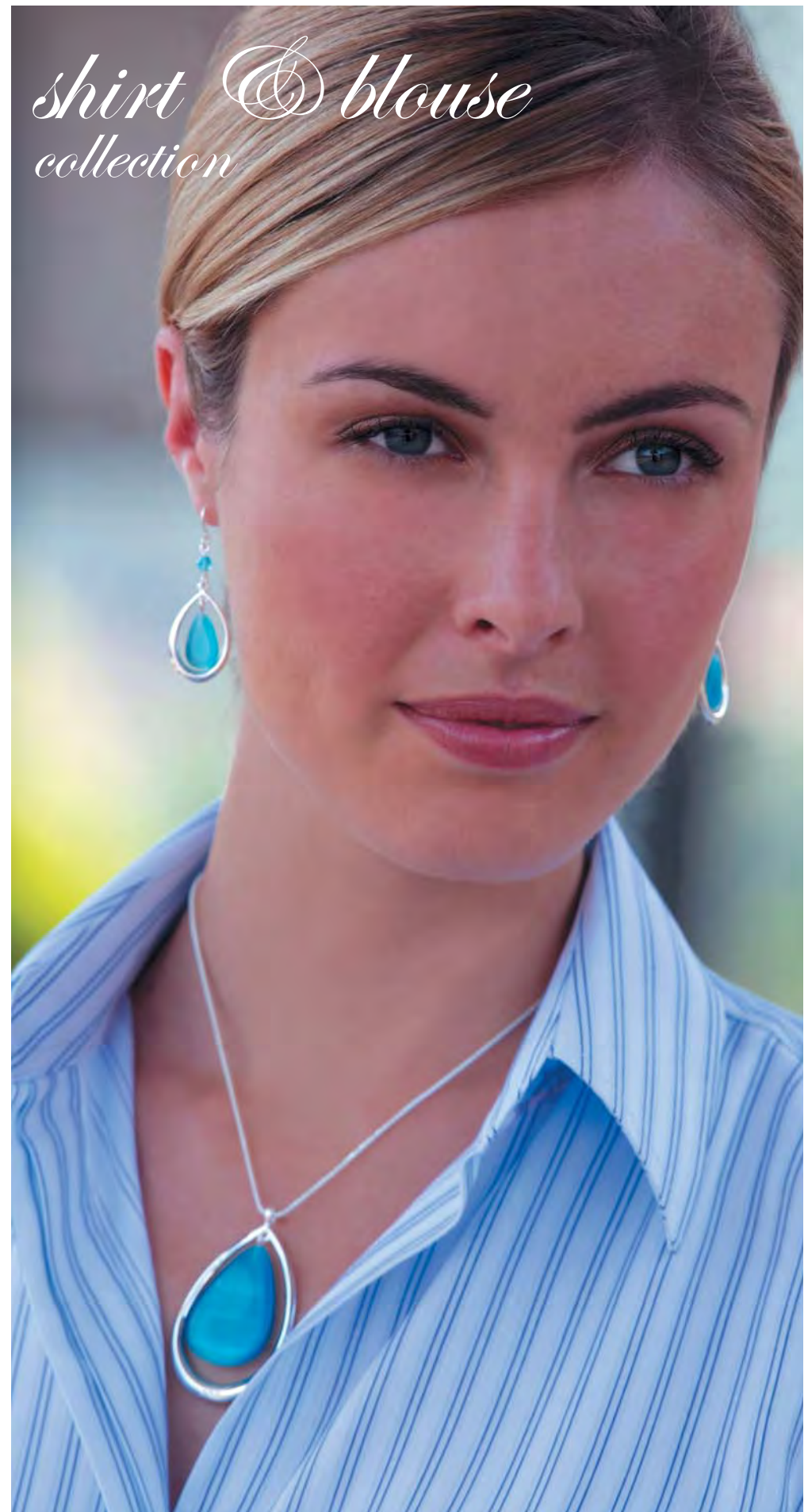
Trousers

28 - 48
in leg lengths 29.5", 31.5", 33" & 36" unfinished



Lindale Ladies Trenchcoat
Double breasted raincoat with front and rear cape detail, belted, epaulettes.
• Zip out liner
• Removable hood
65% polyester, 35% cotton

Style numbers
2206B Navy
Size Range
6 to 24 regular
8 to 20 long



shirt & blouse collection

A collection of Stylish blouses in both Cotton mix fabrics and easy care micro-fibre polyesters. Attention to detail and fit marks these blouses out from the ordinary corporate wear blouse.

The Sicilia stretch top is made from a superb German fabric and lasts longer than any stretch top on the corporate market and keeps its colour wash after wash.

A collection of matching ladies and men's business shirts made from 100% superfine cotton and cotton rich fabrics. This collection offering both short and long sleeves button fastening and double cuffs in matching men's and ladies styles are ideal for keeping the corporate look together.

The Cotton rich Oxford shirts are ideal for a more relaxed but still professional look.

Solaro Blouse, long sleeve ladies shirt.

Solaro Blouse, long sleeve ladies shirt.
Fly front, double cuff with cuff-knot,
Machine washable
100% Cotton
2199E - Blue Stripe
Available in sizes 8 - 24 Regular



Sassari Blouse, long sleeve ladies shirt.
Fly front, 2 button cuff, machine washable.
100% Cotton
Style number
2198C - Lilac Stripe
Available in sizes 8 - 24 Regular

Solaro Blouse, long sleeve ladies shirt.
Fly front, double cuff with cuff-knot,
Machine washable
100% Cotton
2199B - Pink & Blue Stripe
Available in sizes 8 - 24 Regular



Sassari Blouse, long sleeve ladies shirt.
Fly front, 2 button cuff, machine washable.
100% Cotton
Style number
2198A - City Stripe
Available in sizes 8 - 24 Regular



2 button cuff



double cuff with cuff-knot



100% Cotton tailored shirts



Sassari Blouse, long sleeve ladies shirt.
Fly front, 2 button cuff, machine washable.
100% Cotton
Style number
2198D - Pink Herringbone
Available in sizes 8 - 24 Regular



Bresso Shirt, executive long sleeve men's shirt.
Plain collar, placket front,
double cuff with cuff-knot,
Machine washable
100% Cotton
Style number
7525A - City Stripe
Available in sizes 14.5" - 18"



Bresso Shirt, executive long sleeve men's shirt.
Plain collar, placket front,
double cuff with cuff-knot,
Machine washable
100% Cotton
Style number
7525E - Blue Stripe
Available in sizes 14.5" - 18"



Bresso Shirt, executive long sleeve men's shirt.
Plain collar, placket front,
double cuff with cuff-knot,
Machine washable
100% Cotton
Style number
7525B - Pink & Blue Stripe
Available in sizes 14.5" - 18"



Bareggio Shirt, executive long sleeve men's shirt.
Plain collar, placket front, 2 button cuff,
machine washable.
100% Cotton
Style number
7524C - Lilac Stripe
Available in sizes 14.5" - 18"

Bareggio Shirt, executive long sleeve men's shirt.
Plain collar, placket front, 2 button cuff,
machine washable.
100% Cotton
Style number
7524F - Blue Stripe
Available in sizes 14.5" - 18"

Pavia Blouse, (*Pa v ah*) long sleeve ladies shirt.
Fly front, darts for added shape, round tail bottom,
plain cuff. Machine Washable.
Fabric: 55% Cotton, 45% Polyester
Style number
2152A - White
2152B - Blue
2152C - Black
Size Range 8 - 24

matches with men's
Trafalgar shirt



Lauria Blouse, (*L'ow! Rea*) long sleeve ladies shirt.
Fly front, darts for added shape, round tail bottom.
Machine Washable.
Fabric: 60% Cotton, 40% Polyester
Style number
2154A - Blue Stripe
2154B - Blue Check
Size range 8 - 24

matches with men's
Buckingham shirt (stripe)

Potenza Blouse, (*Pot n sah*) short sleeve ladies shirt.
Fly front, darts for added shape, round tail bottom.
Machine Washable.
Fabric: 55% Cotton, 45% Polyester
Style number
2153A - White
2153B - Blue
2153C - Black
Size Range 8 - 24

matches with men's
Mayfair shirt



Laconi Blouse, (*La cone e*) short sleeve ladies shirt.
Fly front, darts for added shape, round tail bottom.
Machine Washable.
Fabric: 60% Cotton, 40% Polyester
Style number
2155A - Blue Stripe
2155B - Blue Check
Size range 8 - 24

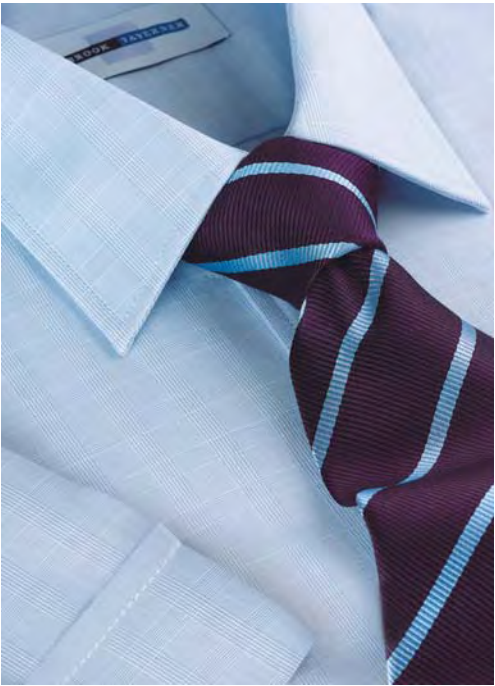
matches with men's
Kensington shirt

Trafalgar Shirt, executive long sleeve shirt.
Pleated back, two spare buttons, round tail bottom,
adjustable cuffs.
Fabric: 55% Cotton, 45% Polyester
Style number
7515A - White
7515B - Blue
7515C - Black
Size Range 14 1/2" - 20"



Buckingham Shirt, executive long sleeve shirt.
Pleated back, two spare buttons, round tail bottom,
adjustable cuffs.
Fabric: 60% Cotton, 40% Polyester
Style number
7519A - Blue Stripe
7519B - Blue Check
Size Range 14 1/2" - 20"
Also available in short sleeve

Mayfair Shirt, executive short sleeve shirt.
Pleated back, two spare buttons, round tail bottom.
Fabric: 55% Cotton, 45% Polyester
Style number
7516A - White
7516B - Blue
7516C - Black
Size Range 14 1/2" - 20"



Kensington Shirt, executive short sleeve shirt.
Pleated back, two spare buttons, round tail bottom.
Fabric: 60% Cotton, 40% Polyester
Style number
7520A - Blue Stripe
7520B - Blue check
Size Range 14 1/2" - 20"

Sicilia Top, (*Sea cheel e ah*) stretch top, round neck, scalloped hemline. Machine Washable.
Fabric: 92% Polyamide (tactel coloursafe), 8% Elastane (Lycra)
Style number
2090A - Ivory
2090B - White
2090D - Blue
2090G - Black
Size Range 6 - 24



Caserta Blouse, (*Ka cert ah*) short sleeve blouse. Herringbone detail, fly front, back darts for added shape. Machine Washable.
Fabric: 80% Cotton, 20% Polyester
Style number
2100B - White
2100C - Lilac
2100D - Blue
Size Range 8 - 24

Trezzo Blouse, (*Tret so*) swiss collar blouse. Short sleeve. Machine Washable.
Fabric: 100% Polyester Mirco fibre, peach skin finish, anti-static.
Style number
2073A - Ivory
2073B - White
Size Range 8 - 24



Andria Blouse, (*An dree ah*) short sleeve blouse. Fly front back darts and back seam for added shape, bias cut to allow natural stretch. Machine Washable.
Fabric: 65% Polyester, 35% Cotton
Style number
2102B - White
2102C - Lilac
2102D - Blue
Size Range 8 - 24

A tie is a great way to look dressed and a great way to individualise your corporate look,

however, the novelty tie has its place but rarely is it the workplace. Stay up to date; stripes, dots, abstract patterns & plains are the choice for business professionals. Ensure it complements the suit and matches your cufflinks. Make sure it is clean and has no pulls in the fabric.



Chelsea Shirt, oxford button down collar shirt. Long sleeve, pleated back, two spare buttons.
Fabric: 70% Cotton, 30% Polyester
Style number
7517A - White
7517B - Blue
Size Range 14 1/2" - 20"



Whitehall Shirt, oxford button down collar shirt. Short sleeve, pleated back, two spare buttons.
Fabric: 70% Cotton, 30% Polyester
Style number
7518A - White
7518B - Blue
Size Range 14 1/2" - 20"



menswear collection

A comprehensive collection of tailored corporate clothing for men. Nearly 100 years of men's tailoring experience is combined with both traditional and modern fabrics and the most sophisticated production facilities in Europe to create what is probably the best quality collection of men's corporate clothing available in Europe.

Business suits in 2 or 3 button with plain or pleat trousers and waistcoats; available in light or heavier weights depending on your corporate requirements. A wide choice of trousers both traditional and fashion along with classic Double breasted or Single breasted Blazers. There is also a beautiful heavyweight classic overcoat (Kingston) and a choice of raincoats.

All available from stock in an extensive size range.

Giglio Jacket, 2 button, semi fitted jacket. Machine washable.



Gigio Jacket, single breasted, 2 button, semi fitted jacket, side vents.
Fabric: 67% Polyester, 30% Wool, 3% Lycra (weft stretch). Machine washable.
Style number
5678A - Navy
5678B - Navy pinstripe
5678D - Black
5678E - Black multi stripe
Size Range
36" - 50" Reg
36" - 48" Short
38" - 48" Long



Gigio Trouser, flat front trouser,
Fabric: 67% Polyester, 30% Wool, 3% Lycra (weft stretch). Machine washable.
Style number
8431A - Navy
8431B - Navy pinstripe
8431D - Black
8431E - Black multi stripe
Size Range
28" - 48" Waist
Leg Lengths
29.5", 31.5", 33" or
36" unfinished, tailored to length required.



Nanotech operates at a molecular level for life

- Water and oil repellent
- Durability
- Crease recovery

Recommended washing instructions for nanotech:
Wash following garment care label. Steam ironing will enhance performance. Dry sheet fabric softeners are recommended not liquid softeners.



Adds comfort, movement and crease recovery



Avalino Jacket, single breasted 2 button jacket. Side vents, 4 inside pockets, semi fitted jacket. Machine washable.
Fabric: 54% Polyester, 44% Wool, 2% Lycra (weft stretch)
Style number
5647A - Navy
5647B - Navy Pinstripe
5647C - Charcoal
5647D - Black
5647F - Charcoal Pinstripe
Size Range
36" - 50" Reg
36" - 48" Short
38" - 48" Long



Avalino Trouser, flat front trouser,
Fabric: 54% Polyester, 44% Wool, 2% Lycra (weft stretch). Machine washable.
Style number
8387A - Navy
8387B - Navy Pinstripe
8387C - Charcoal
8387D - Black
8387F - Charcoal Stripe
Size Range
28" - 44" Waist
Leg Lengths
29.5", 31.5", 33" or
36" unfinished, tailored to length required.



Imola Jacket, single breasted 3 button jacket. Sophisticated tailoring, centre vent, 4 inside pockets. Machine washable.
Fabric: 54% Polyester, 44% Wool, 2% Lycra (weft stretch)
Style number
5646A - Navy
5646B - Navy Pinstripe
5646C - Charcoal
5646D - Black
5646F - Charcoal Pinstripe
Size Range
36" - 50" Reg
36" - 48" Short
38" - 48" Long



Imola Trouser, single pleat trouser.
Fabric: 54% Polyester, 44% Wool, 2% Lycra (weft stretch)
Style number
8314A - Navy
8314B - Navy Pinstripe
8314C - Charcoal
8314D - Black
8314F - Charcoal Pinstripe
Size Range
28" - 48" Waist
Leg length 29.5", 31.5", 33" or
36" unfinished, tailored to length required.





Start the day with a shave

and treat your face to a good skin tonic (a word of caution, don't overdo the after shave! You are a professional, you need to be remembered not your after shave).



Ortona Jacket, single breasted 3 button jacket.
Sophisticated tailoring, centre vent, 4 inside pockets.
Fabric: 55% Polyester, 45% Wool
Style number
5495A - Navy
5495B - Navy Shadow Stripe
5495C - Charcoal
5495D - Black
Size Range
36" - 50" Reg
36" - 48" Short
38" - 48" Long

Trafalgar Shirt, (see page 71)



Ortona Trouser, single pleat trouser.
Fabric: 55% Polyester, 45% Wool
Style number
8374A - Navy
8374B - Navy Shadow Stripe
8374C - Charcoal
8374D - Black
Size Range
28" - 48" Waist
Leg lengths 29.5", 31.5", 33" or
36" unfinished, tailored to length required.



Warwick Jacket, single breasted 3 button jacket.
Sophisticated Tailoring.
Plain Back, 4 inside pockets.
Fabric: 60% Wool, 38% Polyester, 2% Lycra
Style number
5177 A - Navy
5177 B - Navy Pinstripe
Size Range
38" - 50" Reg
36" - 48" Short
38" - 48" Long

Bareggio Shirt, (see page 69)



Warwick Trouser, single pleat.
Style number
8164 A - Navy
8164 B - Navy Pinstripe
28" - 50" Waist
Leg Lengths 29.5", 31.5", 33" or
36" unfinished, tailored to length required.

Hatfield Jacket, single breasted 3 button jacket. Tailored from “Supreme Twill” Brook Taverner’s own superfine wool blend. Plain Back, 4 inside pockets.
Fabric: “Supreme Twill” 55% Polyester, 45% Wool
Style number
5002 B - Navy
Size Range
36” - 50” Reg
38” - 48” Short
38” - 48” Long



Hatfield Trouser, twin pleats.
Fabric: 55% Polyester, 45% Wool
Style number
8040B - Navy
28” - 50” Waist
Leg Lengths 29.5”, 31.5”, 33” or
36” unfinished, tailored to length required.



Woburn Jacket, single breasted 3 button jacket. Tailored in this superb wool rich fabric with Lycra. Plain back, 4 inside pockets.
Fabric: 60% Wool, 38% Polyester, 2% Lycra bi-stretch
Style number
5009A - Charcoal
5009B - Navy
5009C - Black
Size Range
36” - 50” Reg
36” - 48” Short
38” - 48” Long



Woburn Trouser, single pleat trouser.
Fabric: 60% Wool, 38% Polyester, 2% Lycra
Style number
8043A - Charcoal
8043B - Navy
8043C - Black
Size Range
28” - 48” Waist
Leg lengths 29.5”, 31.5”, 33” or
36” unfinished, tailored to length required.



Bareggio Shirt, (see page 69)

Mix and Match Jacket, classic single breasted jacket. 2 button, side vents, 4 inside pockets, hand stitched edges.
Fabric: Sunningdale 55% Polyester, 45% Wool



Style number
5047A - Mid Grey
5047C - Charcoal

Style number
5047B - Navy
5047D - Black

Size Range
36” - 50” Reg
36” - 48” Short
36” - 48” Long

Size Range
36” - 54” Reg
36” - 48” Short
36” - 48” Long



Trafalgar Shirt, (see page 71).

HIGH PERFORMANCE

Mix and Match collection
• Durability

Black Waistcoat, single breasted, 5 button wasitcoat with 4 pockets to match jacket.
Fabric: 55% Polyester, 45% Worsted
Style number
1081D - Black
Size Range
36” - 54” Reg
36” - 48” Short
36” - 48” Long



(not shown)



Branmarket Trouser, single pleat trouser.
Easy care, 1 hip pocket, french bearer.
Machine Washable.
Fabric: Sunningdale 55% Polyester, 45% Wool



Style number
8432A - Mid Grey
8432B - Navy
8432C - Charcoal
8432D - Black

Size Range
28” - 50” Waist
Leg lengths 29.5”, 31.5”, 33” or
36” unfinished, tailored to length required.



Reigate Blazer, double breasted blazer.
 Button 2 show 6, hand stitched edges.
 Fabric: Pure New Wool
 Style number
 7046A - Navy
 Size Range
 36" - 54" Reg
 36" - 46" Short
 36" - 48" Long
 Bresso shirt, (see page 68)



Henley Blazer, 'club' blazer. Single breasted, button 2 with side vents, patch pockets.
 Fabric: 55% Polyester, 45% Wool, Faile Weave
 Style number
 5051A - Green
 5051B - Black
 5051C - Navy
 5051D - Royal
 5051E - Wine
 Size Range
 36" - 50" Reg
 38" - 46" Short
 38" - 46" Long



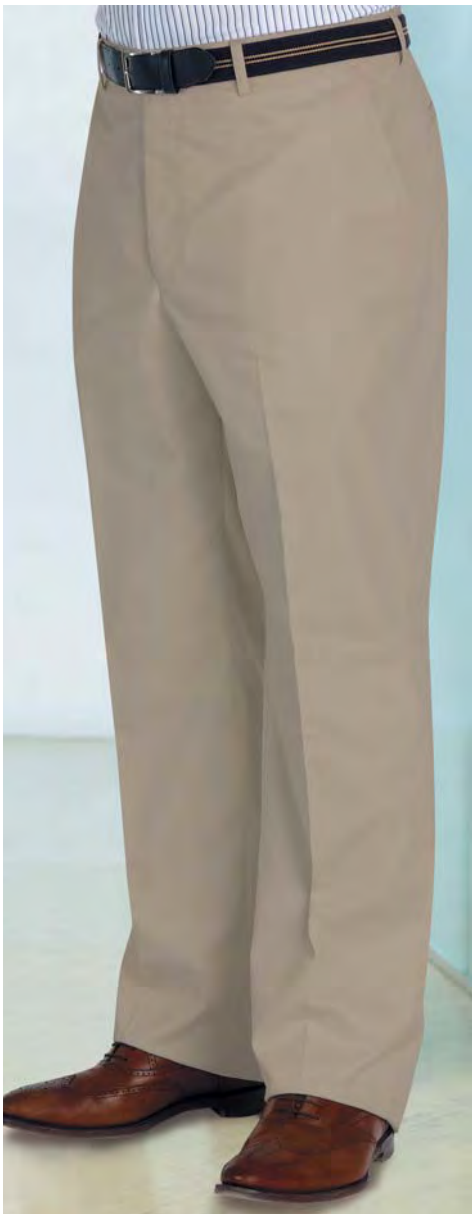
Trafalgar shirt, (see page 71)

Oxford Blazer, single breasted blazer.
 2 patch pockets and a breast welt, side vents, hand stitched edges.
 Fabric: Pure New Wool
 Style number
 7057A - Navy
 Size Range
 36" - 54" Reg
 36" - 46" Short
 36" - 48" Long



HIGH PERFORMANCE

- Choose between heavyweight or lightweight trouser
- Machine washable
- Durability
- The ultimate in high performance trousers. Available in light and heavyweight for those who need trousers that last and last.
- Over 100,000 rubs on Martindale



Camborne Chino
 Plain front, belt loops
 65% polyester, 35% cotton

Style number
 8468A Beige
 8468B Navy

Size Range
 32" to 46" short (29.5")
 32" to 48" regular (31.5")
 32" to 46" long (33")
 32" to 46" unfinished (36")



Branmarket Trouser, single pleat trouser.
 Easy care, 1 hip pocket, french bearer.
 Machine Washable.
 Fabric: Sunningdale 55% Polyester, 45% Wool

Style number
 8432A - Mid Grey
 8432B - Navy
 8432C - Charcoal
 8432D - Black

Size Range
 28" - 50" Waist
 Leg lengths 29.5", 31.5", 33" or
 36" unfinished, tailored to length required.



Carlton Trouser, single pleat trouser.
 Easy care, 1 hip pocket, french bearer.
 Machine Washable.
 Fabric: 70% Polyester, 30% Wool

Style number
 8162B - Navy
 8162C - Charcoal
 8162D - Black

Size Range
 28" - 50" Waist
 Leg lengths 29.5", 31.5", 33" or
 36" unfinished, tailored to length required.

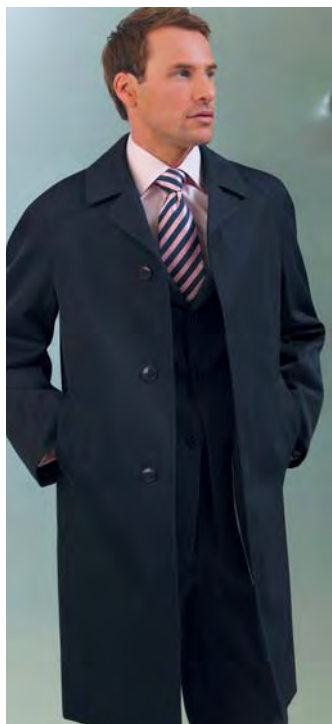




Croydon Overcoat, SB3, fly front, centre vent, satin lined, AMF edges.
60% wool, 20% cashmere, 20% polyamide
Style numbers and size range
9457A Grey
36" to 50" regular
9457B Navy
36" to 50" regular
9457C Black
36" to 54" regular



Grasmere Trench Coat, Double breasted raincoat with front and rear cape detail, belted, epaulettes.
Zip out liner
65% polyester, 35% cotton
Style numbers and size range
9454A Stone
38" to 54" regular
9454B Navy
38" to 54" regular
40" to 48" long
9454C Black
38" to 54" regular



Whipcord Coat, single breasted coat. 3 button fly front, centre vent, raglan sleeve, super viscose check lining.
Fabric: 55% Polyester, 45% Wool Traditional Whipcord Twill
Style numbers
4003B - Navy
4003H - Charcoal
4003D - Black
Size Range
36" - 50" Reg
40" - 48" Long



formal wear collection



formal wear collection
A collection of timeless formal wear; Tailcoat, lounge jacket, tuxedo and black jacket with striped trouser.

These clothes are engineered for the Formal environment. At Brook Taverner we have been serving the demands of the Formal wear customer for over 50 years; we have learnt that it is an exacting environment and looking extremely smart and well groomed is the minimum requirement. For this very reason we use traditional fabrics and traditional tailoring methods but we take advantage of ultra modern production facilities to create consistency. These garments demand to be respected, they enjoy being on show, they will enhance your formal environment.

Herringbone Pure New Wool Formal Wear

Tailcoat, single breasted with double breasted lapels. Centre vent.
Fabric: Pure New Wool Herringbone
Style number
5701A - Black
Size Range
36" - 50" Reg
38" - 46" Short
38" - 48" Long



Lounge Jacket, single breasted, 2 buttons, side vents.
Fabric: Pure New Wool Herringbone
Style number
5702A - Black
Size Range
36" - 50" Reg
38" - 46" Short
38" - 48" Long

Waistcoat, single breasted, 5 button, 2 lower welt pockets.
Fabric: Pure New Wool Herringbone
Style number
1701A - Black
Size Range
36" - 50" Reg
38" - 48" Long



Herringbone Trouser, single pleat, buckle side adjuster.
Fabric: Pure New Wool Herringbone
Style number
8702A - Black
Size Range
28" - 52" Waist
Leg lengths 37" unfinished

Eveningwear



Single Breasted Dress Jacket, 1 button fastening with satin faced lapels and pocket flaps, side vents.
Fabric: 55% Polyester, 45% Worsted
Style number
5439A - Black
Size Range
36" - 56" Reg
36" - 54" Short
38" - 52" Long



Tuxedo, 1 button fastening with step collar, plain back, straight side pockets, cloth buttons.
Fabric: 55% Polyester, 45% Worsted
Style number
5442A - White
Size Range
36" - 50" Reg
38" - 46" Short
38" - 46" Long



Dress Trouser, single pleated front, satin stripe, side seam, half lined.
Fabric: 55% Polyester, 45% Worsted
Style number
8354A - Black
Size Range
28" - 54" Waist
Leg lengths 29.5", 31.5", 33" or 36" unfinished, tailored to length required.

Black Jacket & Stripes Formal Wear



Single Breasted Black Jacket, side vents, 4 inside pockets, tailored from our Sunningdale fabric.
Fabric: 55% Polyester, 45% Worsted
Style number 5047D - Black
Size Range 36" - 54" Reg
36" - 48" Short
36" - 48" Long



Black Waistcoat, single breasted, 5 button waistcoat with 4 pockets to match jacket.
Fabric: 55% Polyester, 45% Worsted
Style number 1081D - Black
Size Range 36" - 54" Reg
36" - 48" Short
36" - 48" Long



Stripe Trouser, superbly tailored in a wool blend twill, side adjuster. Half lined. Machine Washable.
Fabric: 55% Polyester, 45% Worsted
Style number 8022A - Morning Stripe, flat front.
8022B - Morning Stripe, twin pleated front.
Size Range 28" - 52" Waist
Leg lengths 29.5", 31.5", 33" or 36" unfinished, tailored to length required.

Branmarket Trouser, single pleat trouser. Easy care, 1 hip pocket, french bearer. Machine Washable.
Fabric: Sunningdale 55% Polyester, 45% Wool
Style number 8432D - Black
Size Range 28" - 50" Waist
Leg lengths 29.5", 31.5", 33" or 36" unfinished, tailored to length required.



Thank you for taking the time to look at our business collections.

GARMENT	STYLE NO.	COLLECTION	PAGE NO	GARMENT	STYLE NO.	COLLECTION	PAGE NO	GARMENT	STYLE NO.	COLLECTION	PAGE NO	GARMENT	STYLE NO.	COLLECTION	PAGE NO
Adria Skirt	2190	Corporate	16	Busso Waistcoat	1074	Sophisticated	29	Lindale Raincoat	2206	Ladies Raincoat	64	Sondrio Skirt	2081	Bi Stretch	60
Alessandria Trousers	2193	Easycare	49	Cagliari Waistcoat	1109	Performance	41	Latina Skirt	2087	Easycare	50	Sorrento Skirt	2053	Bi Stretch	60
Altino Jacket	2202	Easycare	46	Calabria Jacket	2204	Easycare	48	Lauria Blouse	2154	Shirts/Blouses	66	Striped Trousers	8022	Dresswear	88
Andretta Trousers	2188	Corporate	15	Camborne Chino	8468	Menswear	81	Levanto Trousers	2158	Bi Stretch	61	Susa Jacket	2179	Sophisticated	23
Andria Blouse	2102	Shirts/Blouses	72	Carlton Trousers	8162	Menswear	83	Lounge Jacket	5702	Dresswear	86	Tailcoat	5701	Dresswear	86
Anzio Skirt	2113	Sophisticated	31	Casserta Blouse	2100	Shirts/Blouses	72	Matrice Skirt	2201	Corporate	16	Trafalgar Shirt	7515	Shirts/Blouses	71
Aprilla Jacket	2188	Corporate	10	Catania Jacket	2176	Sophisticated	27	Mayfair Shirt	7516	Shirts/Blouses	71	Trento Skirt	2086	Easycare	50
Ascoli Trousers	2175	Sophisticated	31	Chelsea Shirt	7517	Shirts/Blouses	73	Miranda Trousers	2181	Sophisticated	30	Trezzo Blouse	2073	Shirts/Blouses	72
Assisi Skirt	2112	Sophisticated	31	Como Jacket	2186	Corporate	12	Mix 'n' Match Jacket	5047	Menswear	81	Turin Jacket	2067	Bi Stretch	58
Asti Jacket	2178	Sophisticated	25	Croydon Overcoat	9457	Menswear	84	Monza Jacket	2177	Sophisticated	24	Tuxedo Jacket	5442	Dresswear	87
Avalino Jacket	5647	Sophisticated	22	Diamante Jacket	2187	Corporate	14	Ortona Jacket	5495	Performance	36	Varese Trousers	2109	Sophisticated	31
Avalino Trousers	8387	Sophisticated	22	Dinner Jacket	5439	Dresswear	87	Ortona Trousers	8374	Performance	41	Vercelli Trousers	2139	Performance	39
Avola Jacket	2106	Sophisticated	26	Dress Trousers	8354	Dresswear	87	Ovada Jacket	2135	Performance	38	Verona Trousers	2052	Bi Stretch	61
Ballino Skirt	2191	Corporate	16	Diano Trousers	2205	Easycare	49	Oxford Blazer	7057	Menswear	78	Waistcoat	1701	Dresswear	86
Bardolino Trousers	2189	Corporate	15	Elba Jacket	2137	Performance	37	Pavia Blouse	2152	Shirts/Blouses	70	Warwick Jacket	5177	Bi Stretch	57
Bareggio L/S Shirt	7524	Shirts/Blouses	69	Empoli Jacket	2157	Bi Stretch	56	Perugia Waistcoat	2171	Performance	39	Warwick Trousers	8164	Bi Stretch	61
Barletta Trousers	2173	Easycare	49	Giglio Jacket	5678	Corporate	11	Potenza Blouse	2153	Shirts/Blouses	70	Whipcord Coat	4003	Menswear	84
Bari Waistcoat	1072	Corporate	17	Giglio Trousers	8431	Corporate	17	Ravenna Trousers	2140	Performance	39	Whitehall Shirt	7518	Shirts/Blouses	73
Bella Jacket	2185	Corporate	13	Grasmere Raincoat	9454	Menswear	84	Reigate Blazer	7046	Menswear	78	Woburn Jacket	5009	Menswear	76
Bergamo Waistcoat	2192	Corporate	15	Hatfield Jacket	5002	Menswear	80	Sabini Skirt	2142	Performance	40	Woburn Trousers	8043	Menswear	76
Black Waistcoat	1081	Dresswear	88	Hatfield Trousers	8040	Menswear	80	Sassari L/S Shirt	2198	Shirts/Blouses	66/67				
Borello Jacket	2203	Easycare	47	Henley Blazer	5051	Menswear	82	Scapoli Waistcoat	2200	Sophisticated	30				
Branmarket Trousers	8162	Menswear	81	Herringbone Trousers	8702	Dresswear	86	Sicilia Top	2090	Shirts/Blouses	72				
Bresso L/S Shirt	7525	Shirts/Blouses	68	Imola Jacket	5646	Sophisticated	28	Sienna Skirt	2141	Performance	40				
Brindisi Jacket	2138	Performance	36	Imola Trousers	8314	Sophisticated	29	S/B Black Jacket	5047	Dresswear	88				
Buckingham Shirt	7519	Shirts/Blouses	71	Laconi Blouse	2155	Shirts/Blouses	70	Solaro L/S Shirt	2199	Shirts/Blouses	66				



Brook Taverner would love you to choose your corporate clothing from our Business Collections. However, the most important thing is that you have an enjoyable and successful corporate clothing experience. Work and clothing are such a large part of all of our lives it really does pay to invest in clothing that gives confidence to your team and projects a standard that reflects your company’s commitment to excellence.

Good luck and enjoy your search for the perfect corporate look.